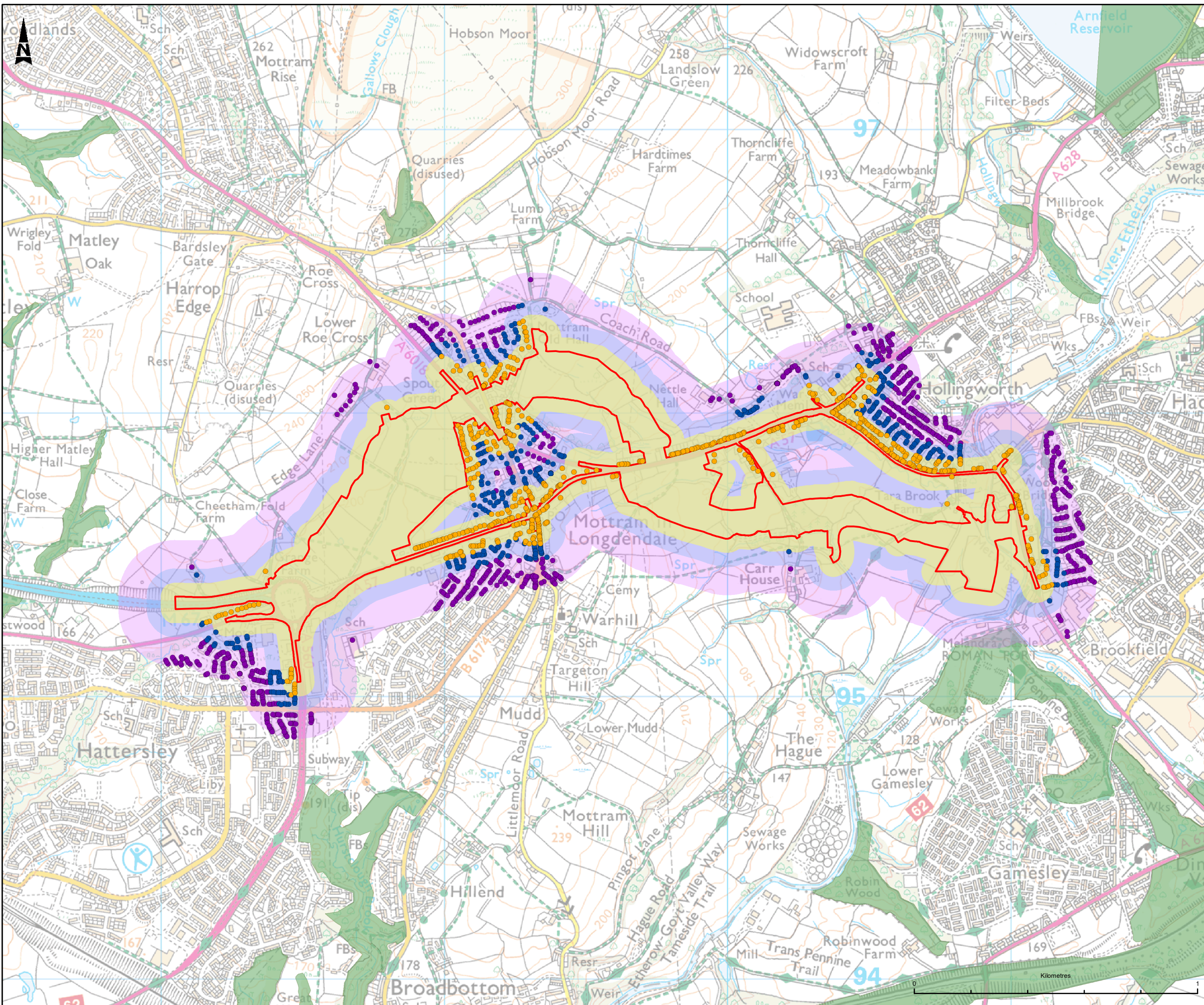


**A57 Link Roads
TR010034**

**6.4 Environmental Statement
Figure 5.3 Receptors Sensitive to Construction
Dust**

APFP Regulation 5(2)(a)

Planning Act 2008 Infrastructure Planning (Applications: Prescribed
Forms and Procedure) Regulations 2009



- LEGEND**
- INDICATIVE CONSTRUCTION SITE BOUNDARY
 - NON-STATUTORY DESIGNATED SITES (LWS, SBI, AW)
 - DISTANCE BAND (0-50M)
 - DISTANCE BAND (50-100M)
 - DISTANCE BAND (100-200M)
 - RECEPTORS SENSITIVE TO CONSTRUCTION DUST (0-50M)
 - RECEPTORS SENSITIVE TO CONSTRUCTION DUST (50-100M)
 - RECEPTORS SENSITIVE TO CONSTRUCTION DUST (100-200M)

This map is reproduced from Ordnance Survey material with the permission of Ordnance Survey on behalf of the controller of Her Majesty's Stationary Office. © Crown Copyright. Unauthorised reproduction infringes Crown copyright and may lead to prosecution or civil proceedings.
 CLIENT NAME: Highways England LICENCE NUMBER: 100030649

Description			
Status	Revision	Issue Date	
Description			
Status	Revision	Issue Date	
Description			
Status	Revision	Issue Date	
Description DCO SUBMISSION			
Status	A4	Revision P01	Issue Date 07/05/21
Drawn	LA	Checked MDL/SR	Reviewed LY
Authorised	MR	Status	
Drawing Suitability			A4
DCO SUBMISSION			



Scheme Name: A57 LINK ROADS

Drawing Title: FIGURE 5.3 AIR QUALITY RECEPTORS SENSITIVE TO CONSTRUCTION DUST

PNS Ref. No.: TR010034/APP/6.4

Drawing Number	HE551473 - BBA - EGN -	Volume	A57_AL_SCHEME - DR - LE - 060413
Location		Type	
Scale	1:12,500	Original Size	A3
Rev		Number	P01